



## Warmheart & Bakeheart Optional Shelf Fitting Instructions



**REQUIRED TOOLS** – Drill, 5mm drill bit, M6 tap, Philips head screwdriver.



1. Offer the shelf up to the desired location on the side of the cookstove, ensuring that both top surfaces are level.



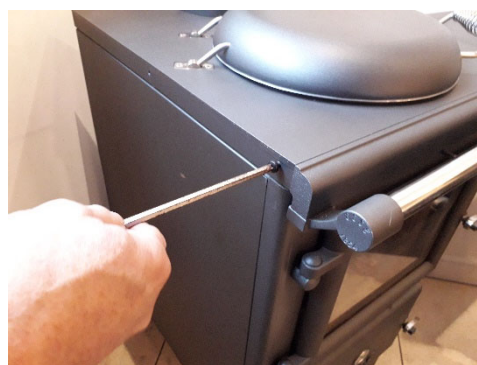
2. Use a pen or pencil to mark the position of the two fixing points on the side of the cookstove, through the two keyhole slots on the shelf.



3. Using a 5mm drill bit, drill through the two marks on the side of the cookstove, to create the two fixing points.



4. Use a M6 tap to add a thread to the drilled holes.



5. Loosely screw the supplied 2 x M6 bolts into the two fixing points.



6. Offer the shelf up to the cookstove, dropping the keyhole slots in place, over the fixing bolts.



7. Tighten the two fixing bolts, so the shelves are held securely in position.