

## Linear 1500

### Burn media installation

Experience has shown that the majority of performance problems are caused by burn media being installed incorrectly. Please take the time to read and follow these instructions as malfunctioning due to incorrect burn media placement is not covered by warranty.

- The Linear MUST NEVER be used with other burn media or burn media that is damaged.
- The Linear burn media sets are different and cannot be interchanged, ensure you have ordered the correct set before installation.

#### Correct placement

It is important to place the burn media in the correct position. Incorrect placement can create carbon build-up and affect performance.

#### Single-sided/double-sided

When installing the burn media you will ALWAYS be working on the side where the pilot assembly is to the back of the firebox.

#### R2903 Linear 1500 driftwood log set kit contents

Part number	Description	Quantity
13044	Vermiculite	1 bag (approx. 0.75 L)
13476	Wire wool (glowing ash)	1 bag (approx. 3 g)
13480	Log set A and stone set <sup>1</sup>	4 logs and 9 stones
13481	Log set B	3 logs

<sup>1</sup> Log set A and stone set come packaged in the same box

#### R2905 Linear 1500 modern media kit contents

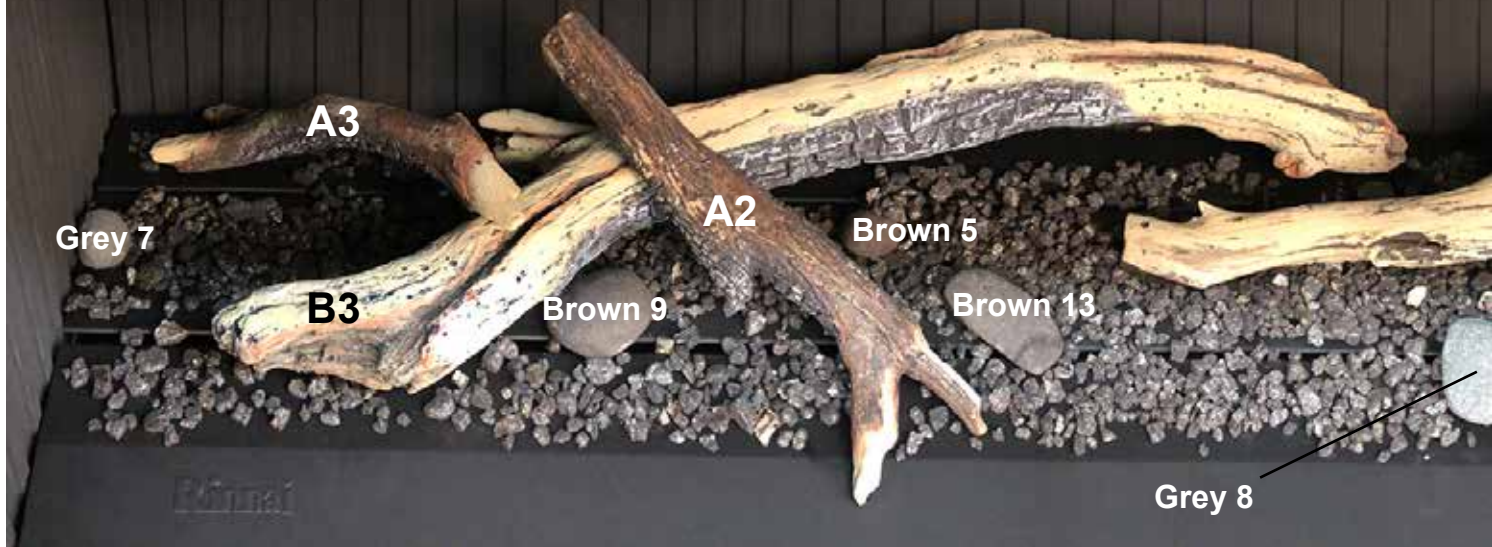
Part number	Description	Quantity
13473	Crushed black glass	3 bags (approx. 3.5 kg)
13476	Wire wool (glowing ash)	1 bag (approx. 3 g)

#### Important

Ensure the gaps between the burners are kept clear of any vermiculite or crushed glass. This is important as these gaps provide secondary air to the unit.

A tip to stop any burn media going into the gaps is to place the installation guide in the burner gap while placing the vermiculite or crushed glass over the burner.

## Driftwood log set (charred side face down)



We recommend identifying the log sections before installation—lay them on the floor in a configuration resembling the above. This will ensure you're not forcing incorrect log pieces onto the burner supports and scratching the paint.



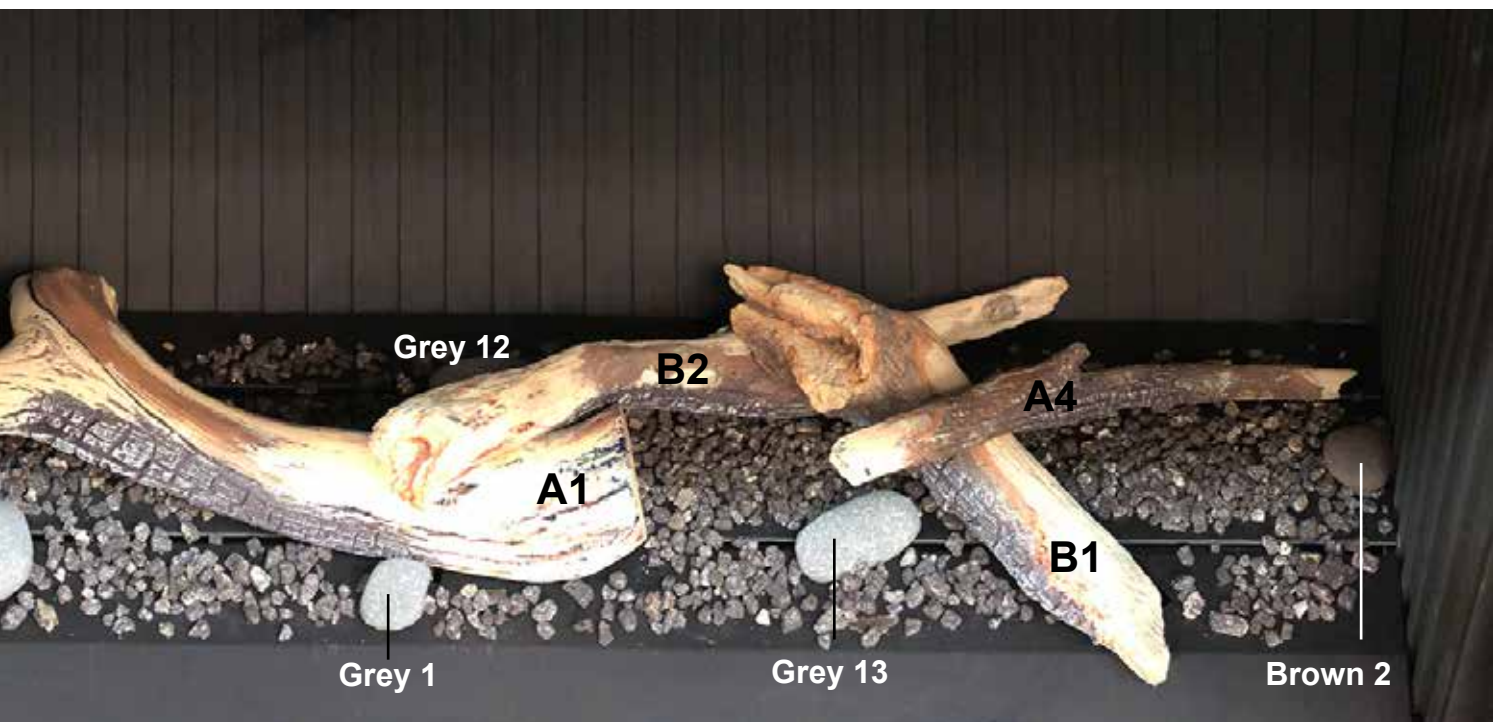
### Stone set (numbers are stamped on the back)



Grey stones

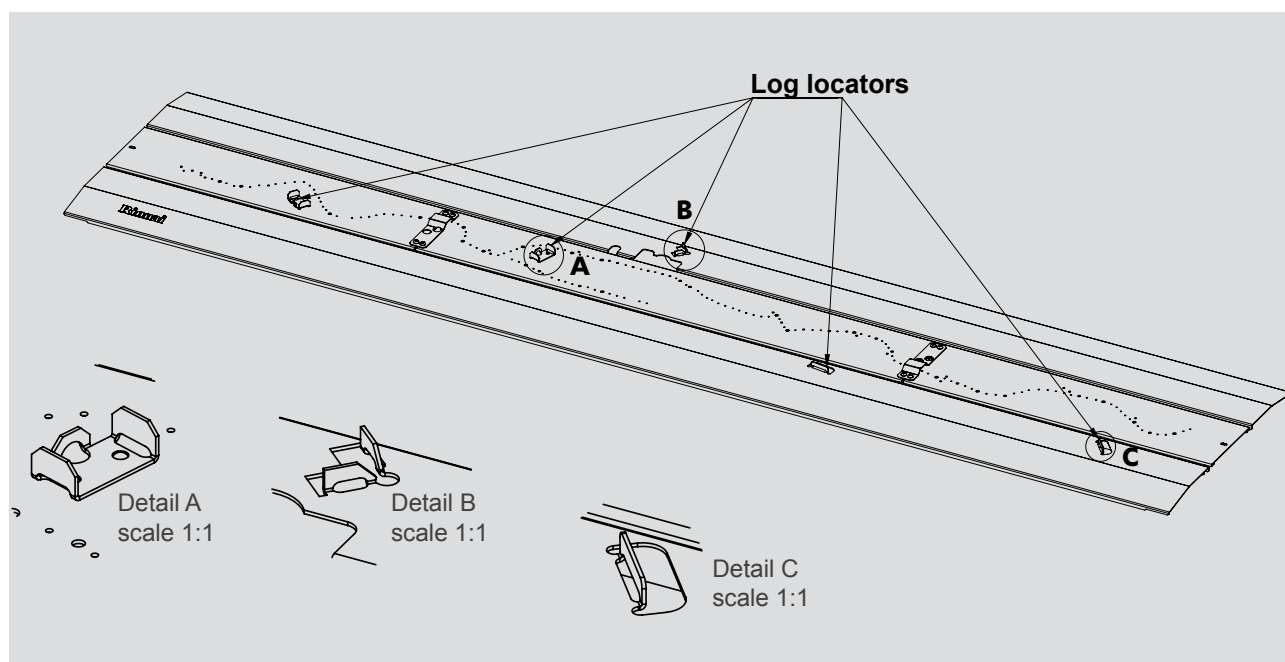


Brown stones



# 1. Fold up the laser cut burner surrounds and tabs

The burners have laser cut sections and tabs that need to be folded up (refer images below) to position the logs.



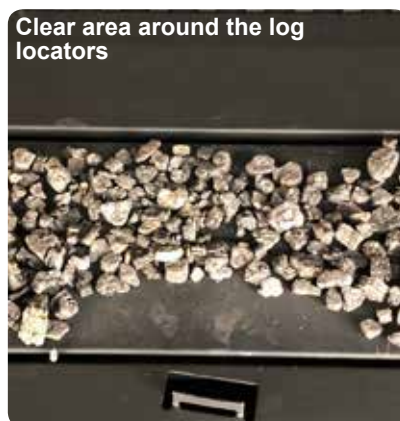


## 2. Spread vermiculite

Using the image on p. 2 for reference, spread (DO NOT POUR) approximately three quarters of the bag of vermiculite across the burners in a single layer. Start the fire and check for complete burner ignition.

Important:

- Avoid blocking the pilot and flame rod ports
- Ensure clearance around the left and right hand log locators
- Ensure the gaps between the burners are kept clear

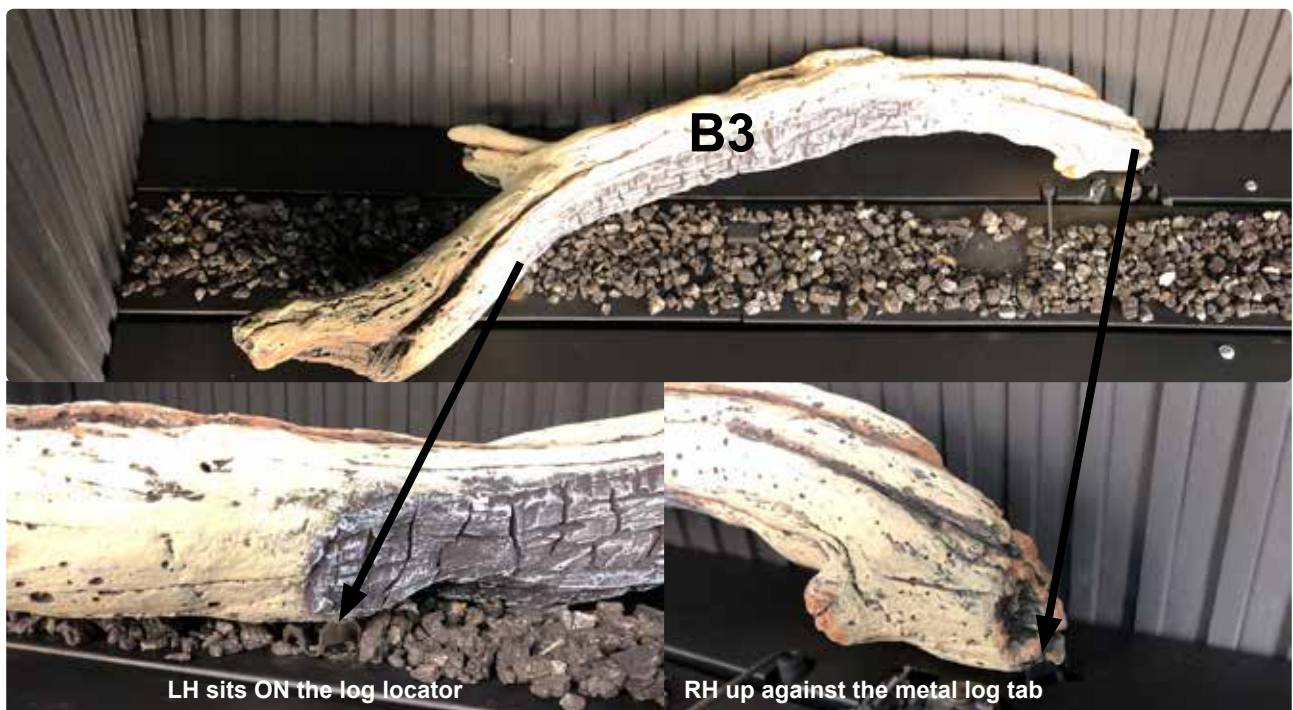


## 3. Add the wire wool

Remove small sections of the wire wool (refer images on p. 10-11) and place where the flames will be. These provide a glow effect and will enhance the flame picture. Keep away from the pilot assembly as this can cause the flame rods to earth out.

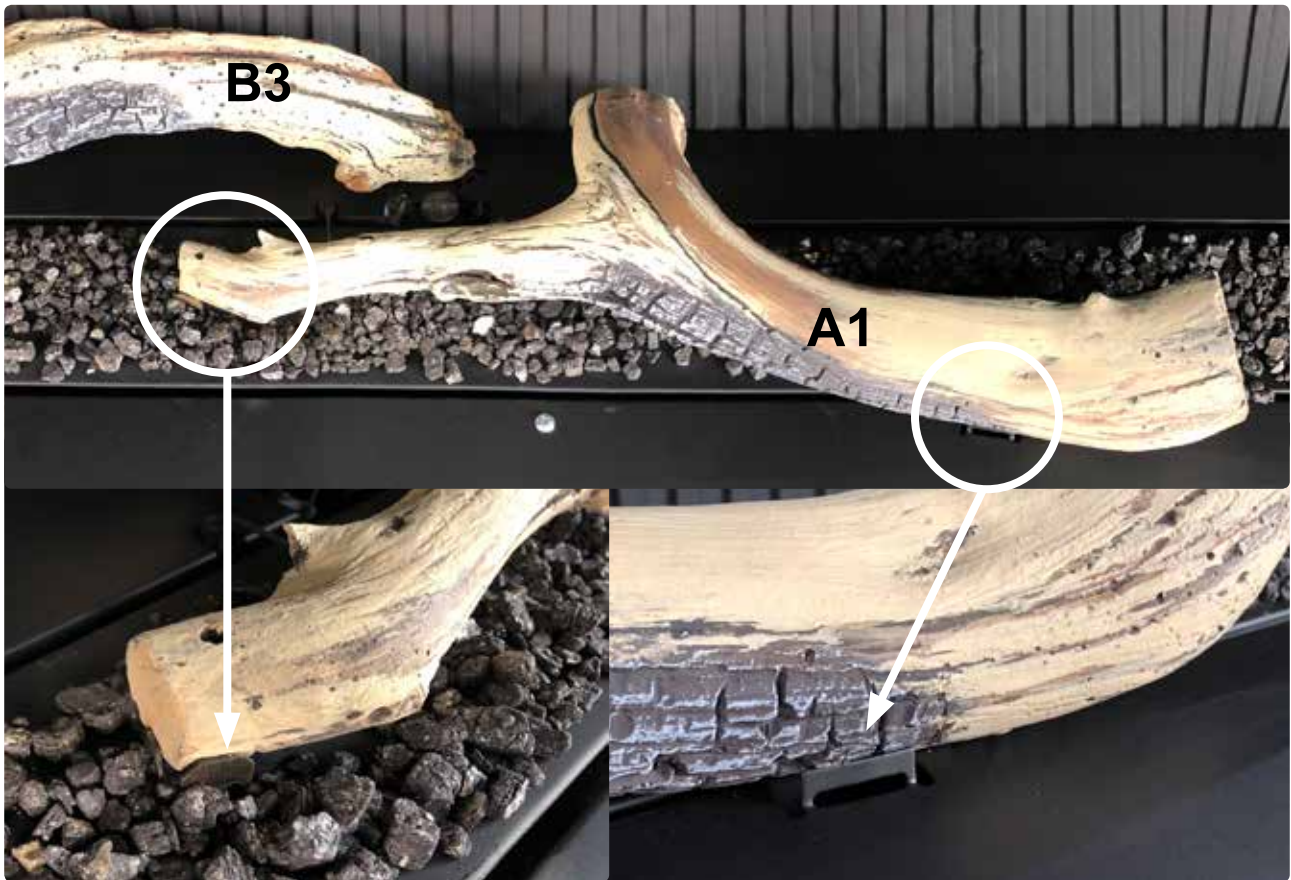
## 4. Install B3 from log set B (for all log pieces—charred side faces down)

Position B3 from log set B. The LH section sits ON the log locator, RH section sits up against the metal log tab.



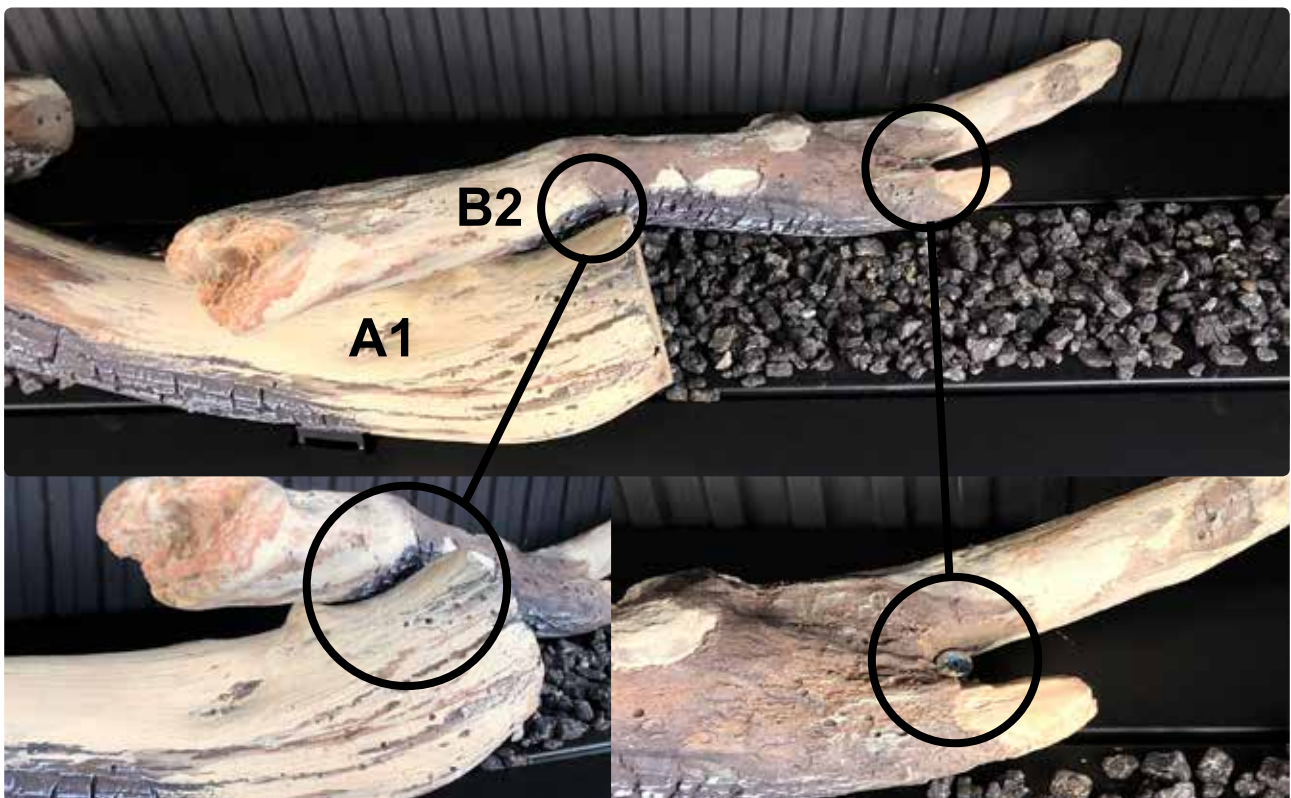
### 5. Install A1 (from log set A)

Position A1, the LH section fits snugly into the two corner metal log locators, the RH section fits inside AGAINST the log locator.



### 6. Install B2 (from log set B)

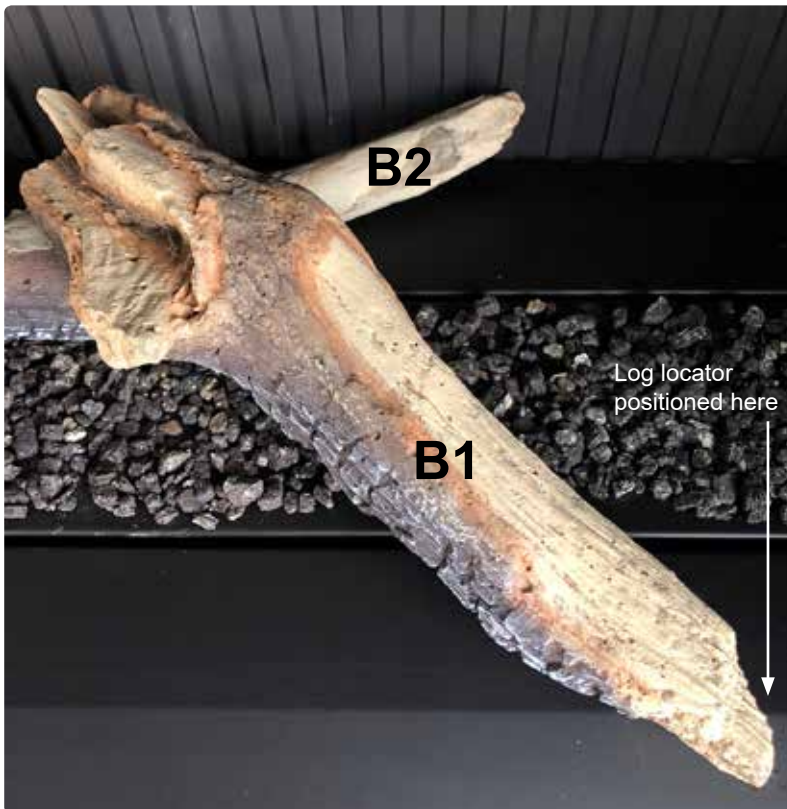
Position B2, the LH section rests in the cradle of A1, RH section, where the log splits, sits around the log locator pin.





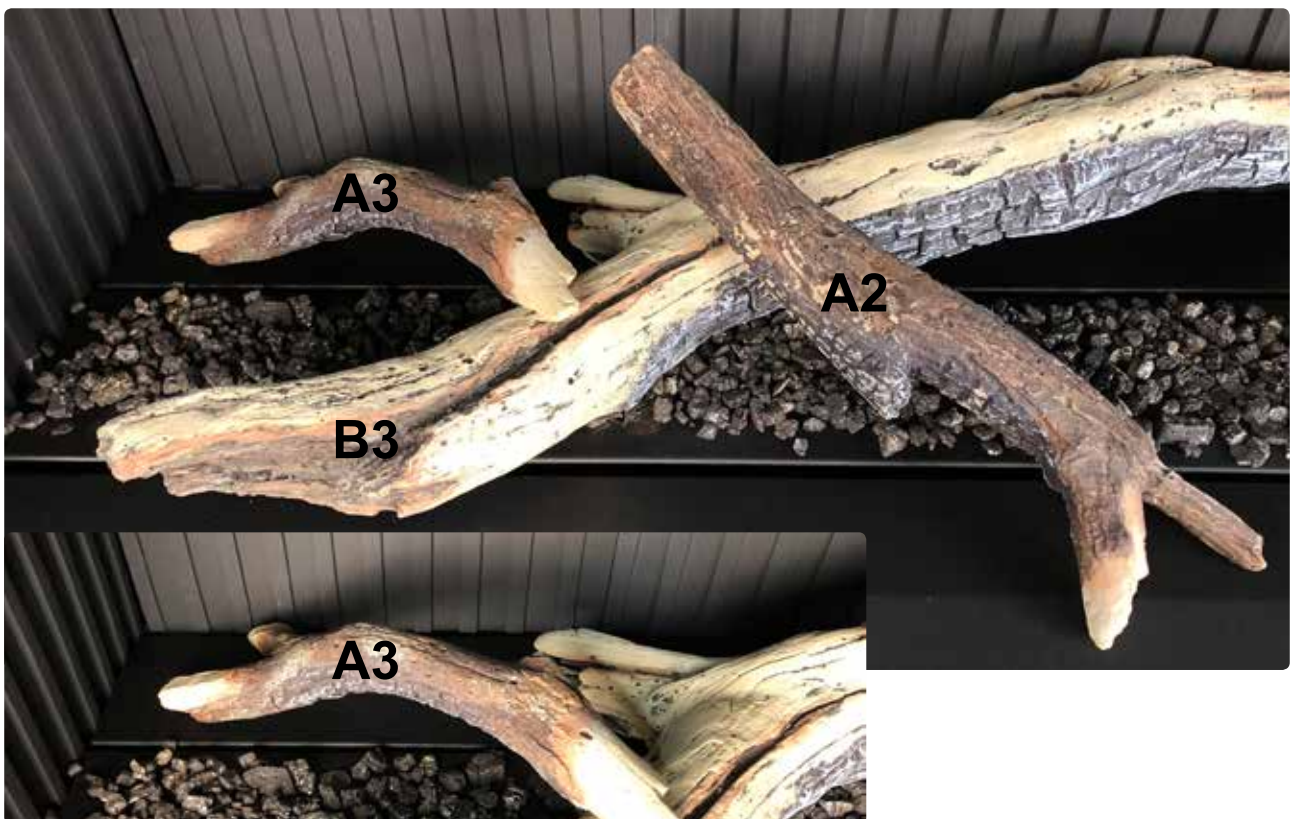
### 7. Install B1 (from log set B)

Position B1, the LH section rests in the curve of B2. The log locator for the RH section sits **behind** the log—push the back of the log against the locator.



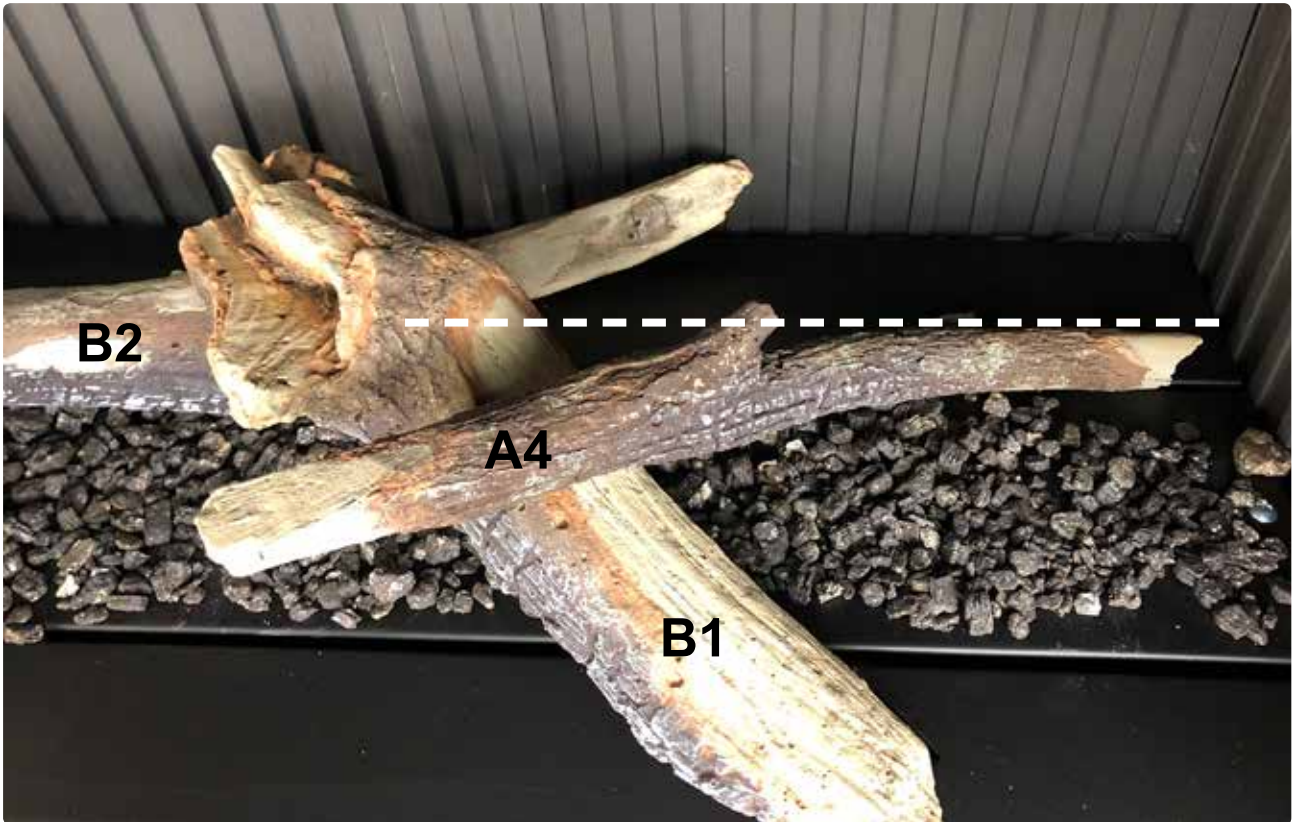
### 8. Install A2 and A3 (from log set A)

A3 sits towards the back end of the burner. The RH section rests on B3. **DO NOT** cover the larger burner holes. Log A2 sits on B3—keep clear of the larger burner hole. Note the angle position in relation to B3.



### 9. Install A4 (from log set A)

A4 sits B1, ensure the large burner holes are not covered.



### 10. Install the stone set

Using the assembled image on p.2-3, position the stones. Unlike the log pieces the stones can be positioned where you like, however DO NOT place over the burner ports. Stones 1, 5, or 7 can be placed in the cross-lighting bridges.

### 11. Position the left over vermiculite

Place the remaining vermiculite around the burners and use to cover the metal log locator brackets, if they are showing, and any other gaps.

### 12. Test operation

Check for cross-lighting and complete flame across all the burners, and check impingement on the logs. Adjust logs A2, A3, or A4 if required. Some flames may lean back in the fire until the glass has been installed. Refer following page for final flame pattern (with glass on) for the single and double-sided models.



**Final flame pattern 1500 log set (single-sided)**



**Final flame pattern 1500 log set (double-sided)**







## Crushed glass and wire wool



1. Evenly spread the complete bag of crushed glass over the surface of the burner **BETWEEN the fold lines** of the back and front burner. Ensure the gaps between the burners are kept clear of glass pieces. This is important as these gaps provide secondary air to the unit, refer guide on how to keep clear on the front page.
2. Remove SMALL sections of the wire wool and place evenly across the burner where the flames will be (otherwise it will do nothing). These provide a glow effect and will enhance the flame picture.

**Important:** Make sure the area around the pilot assembly is kept clear.



3. Test operation by checking for cross-lighting and complete flame across all the burners. Some flames may lean back in the fire until the glass has been installed.





## **Rinnai Australia Pty Ltd**

100 Atlantic Drive, Keysborough, Victoria 3173

P.O. Box 460, Braeside, Victoria 3195

Tel: +613 92716625

Fax: +613 92716622

### **National Help Line**

Tel: 1300 555 545\*

Fax: 1300 555 655\*

*\* Cost of a local call higher from mobile or public phones*

[www.rinnai.com.au](http://www.rinnai.com.au)  
[enquiry@rinnai.co.au](mailto:enquiry@rinnai.co.au)

## **Rinnai New Zealand Ltd**

105 Pavilion Drive, Mangere, Auckland 2022

P.O. Box 53177, Auckland Airport, Auckland 2150

Tel: +64 9 257 3800

Fax: +64 9 257 3899

### **0800 Rinnai**

0800 746 624

[www.rinnai.co.nz](http://www.rinnai.co.nz)  
[info@rinnai.co.nz](mailto:info@rinnai.co.nz)