



YUNCA

PART OF THE FAMILY

Wood Burners



March 2018



Why choose Yunca?

Yunca heaters have gained a reputation for uncompromising build quality and heating ability. Customers say they are more than just heaters; they become “**part of the family**”.

Founded in 1977 on the principal of **quality first**, Yunca is a 100% New Zealand family-owned business. A dedication to quality and customers means that they still carry a full range of parts for models manufactured over 40 years ago; heaters which are still going strong today.

The new range of heaters are both modern and stylish, with the same commitment to being **more than just a heater**.

After manufacturing their first heater in 1977 for Terry and Vicky Young's own 100-year-old home, Yunca went on to establish itself through the 1980s and 1990s as a leading manufacturer of wood heaters of unsurpassed **quality, heat** and **efficiency**.

Now a second generation family business, Karyna Young is the Managing Director. With her father, Terry, running the manufacturing and engineering side of the business, Karyna has been responsible for introducing a company-wide renewed focus on product design and company service provision.

Not only have Yunca heaters been keeping New Zealanders warm for over 40 years their heaters are some of the cleanest in the world, in keeping with sustaining New Zealand and Australia's environments.

Today, Yunca manufactures their heaters from their three factories in India, Dunedin and Invercargill, where the head office is based. The addition of the India factory makes them competitive in the international marketplace and allows Yunca to provide a well priced unit without compromising quality.

Yunca Heating still remains loyal to the commitment first made in 1977 . . . “**quality first**”.





Monte Range



STANDARD COLOUR

 HTP Black
– a High Temp Paint finish

The MONTE Wood Burner range has a fresh, modern design combined with a convenient cook-top. There are 3 options in the MONTE range.

Why is the Monte so good?

- 10+ hour overnight burn time
- Solid 8mm plate-steel cook-top, quality engineered
- 40mm refractory firebricks for high efficiency and slow overnight heat release
- 10 year fire box warranty
- Thick 5mm constructed plate steel firebox
- Available as Base, Euro and Leg models as shown
- Also available as a **WET** model in all three versions
- Large door for easy refuelling
- Secondary air wash system for cleaner burning and beautiful clean glass
- Large glass area for maximum ambience and flame enjoyment
- HTP Black (High Temp Paint) finish
- Convenient wood storage box (Euro model)
- Clean air approved for all Australian states
- Estimated 20kW of renewable, clean heat output



Who buys the Monte?

MONTE is a stylish modern fire incorporating a cook-top, which adds functionality to any home. The large glass area maximises the ambience only a solid-fuel fire can give, and the large door allows ease of refuelling. Owners of contemporary to traditional homes appreciate the MONTE's sleek good looks, genuine practicality and Yunca reliability. It can be used as both a primary and secondary heating source depending on climate, room size and insulation. It is also great for keeping dinner warm on cold winter nights.

SPECIFICATIONS

HEAT OUTPUT – Estimated 20kW maximum.

EMISSION AND EFFICIENCY LEVELS – Models available that conform to sub 1.5g/kg emission and efficiencies of 60% or greater AS/NZS 4012:2014 and AS/NZS 4013:2014 both in wet and dry models.

FLOOR PROTECTOR CLEARANCE – Ash hearth: one layer of continuous non-combustible material. Front 300 mm, side 125mm.

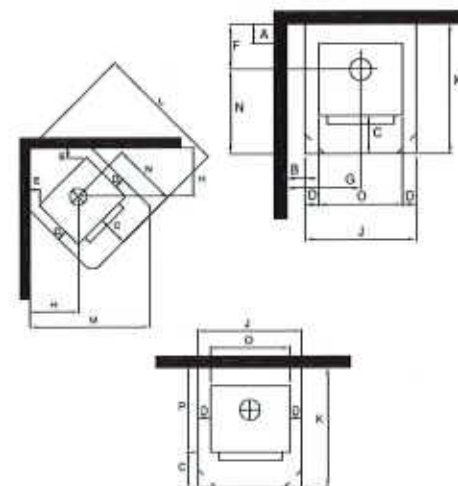
WALL CLEARANCES – WITH YUNCA STD FLUE GUARD – From combustible surfaces:

MONTE BASE: rear 200mm, side 450mm, and angled 280mm

MONTE EURO: rear 200mm, side 350mm, and angled 200mm

MONTE LEG: rear 200mm, side 435mm, and angled 245mm

FIRE – 8mm plate-steel cook-top. 5mm plate-steel firebox fully lined with 40mm refractory firebricks.



MINIMUM FIRE TO COMBUSTIBLE WALL CLEARANCES WITH YUNCA FLUE GUARD FITTED (measurements in millimetres)

MODEL	A	B	E	F	G	H
*MONTE EURO	200	350	200	366	682	520
*MONTE LEG	200	435	245	366	767	565
*MONTE BASE	200	450	280	366	782	600

*TESTED TO AS/NZS 2918:2001

MINIMUM FLOOR PROTECTION MEASUREMENTS (measurements in millimetres)

MODEL	C	D	J	K	L	M	N	O	P
MONTE EURO	300	125	913	999	1368	1278	633	663	699
MONTE LEG	300	125	913	999	1431	1253	633	663	699
MONTE BASE	300	125	913	999	1481	1288	633	663	699

The Monte is available in
3
contemporary styles



Monte Base



Monte Euro



Monte Leg



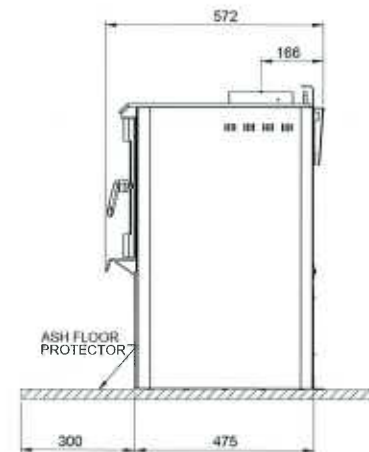
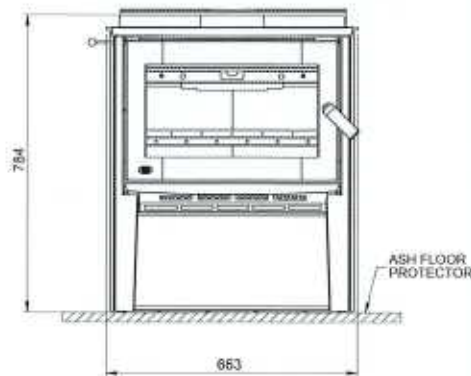
Monte Wet Range



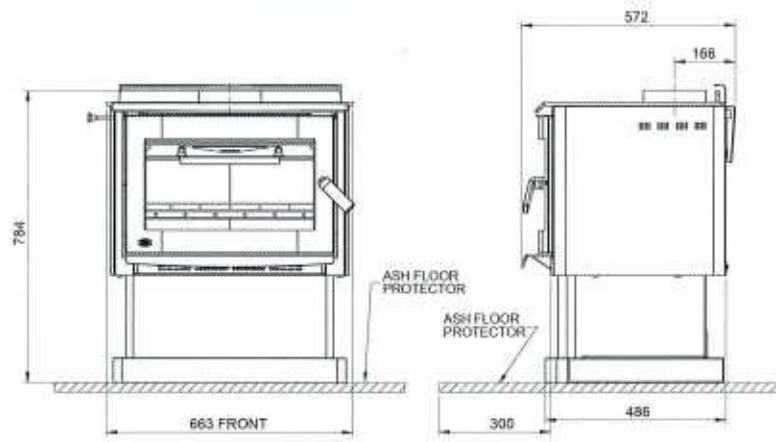
Amazing; heat our home and water cylinder with any of our Monte Wood Burners.



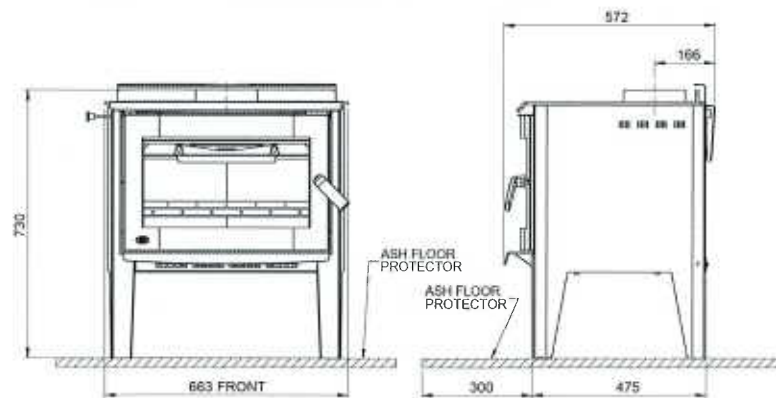
Monte Euro



Monte Base



Monte Leg



What is a Yunca Water Booster?

A water booster is a water-heating unit that is fitted to our Monte Wet range. These have been tested to AS/NZS 4012:2014 and AS/NZS 4013:2014.

Our single stainless water booster is installed inside the firebox and is to be connected by a piped system to the household electric water cylinder. A permit is required and a registered plumber should carry out the installation. The cylinder must have inlets in it to receive the pipes from the water booster unit. Once fitted, it is not recommended that you turn your cylinder off.

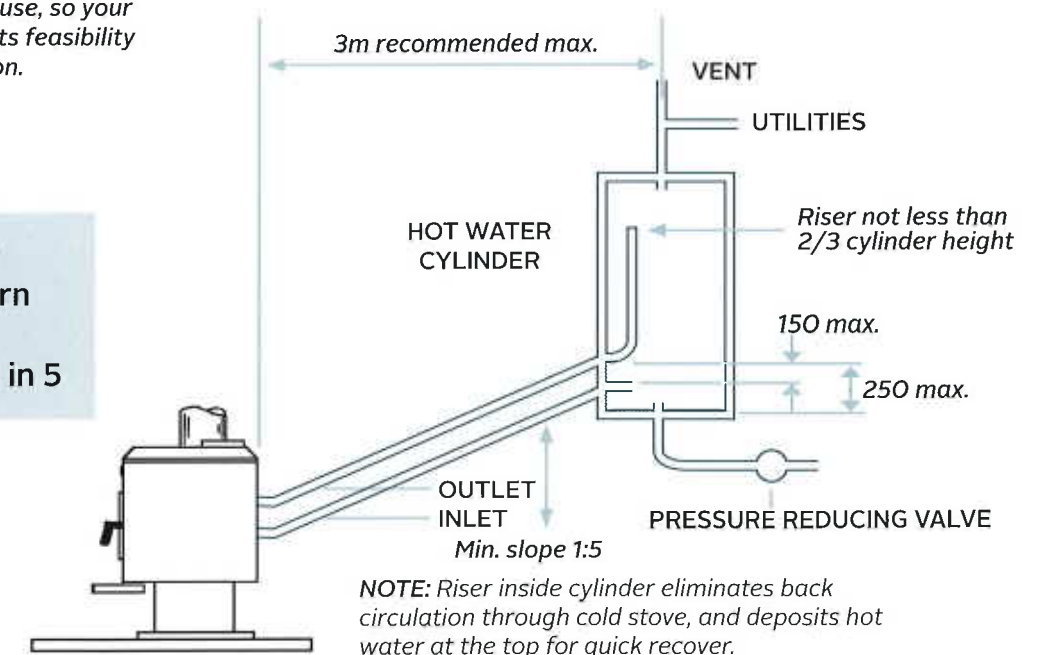
The water booster works by thermal convection. Hot water, being less dense than cold, rises and the heavier cold water falls from the cylinder to the water booster, and is then heated; therefore creating a thermal convection cycle.

When considering a Monte Wet, the following conditions should be observed:

1. The bottom of the water cylinder must be above the top of the water booster outlet from the unit – **THE HIGHER THE BETTER.**
2. It is recommended that the cylinder should be no more than 3 metres horizontally away from the fire – **THE CLOSER THE BETTER.**
3. The hot water return pipe must rise continuously from the outlet at the back of the heater to the water cylinder to prevent air locks forming, and also to improve efficiency – **TO ENSURE FLOW, THE PIPE MUST HAVE A MINIMUM RISE OF 1 IN 5.**
4. If a riser pipe is not already fitted to a cylinder, one should be fitted during installation of the water booster. The riser pipe must exceed two-thirds of the cylinder height.
5. Use sweeping bends only. Sharp bends or restrictions should be avoided, as these reduce the flow factor – **THE LESS BENDS THE BETTER.**
6. The pipes from the water booster to the cylinder should be lagged to prevent heat loss.
7. The system must be free flowing. For that reason, no stopcocks or taps should be fitted.
8. The fire should never be lit until all plumbing is connected, and the hot water cylinder has been filled.

We note that water booster installations can vary from house to house, so your plumber should work out its feasibility for your particular situation.

To ensure proper function, the return pipe must have a minimum rise of 1 in 5





Shown above with ZC fascia fitted

Standard Colour

HTP Black
– a High Temp Paint finish

SPECIFICATIONS

EFFICIENCY LEVELS –
Efficiencies of 60% or greater. AS/NZS 4012:2014 and AS/NZS 4013:2014.

FLOOR PROTECTOR CLEARANCE
– 500mm* extension into room for Zero Clearance installation. 350mm* extension into room for Masonry installation.

* Can be reduced by elevating the unit (refer to installation instructions for details).



Shown above with ZC fascia fitted

Xander

The XANDER Insert Wood Burner suits both modern new builds and retrofitting into existing homes. Suitable for Masonry installations, or as a Built-in “ZC” unit when installed with the optional “Zero Clearance Kit”.

Why is the Xander so good?

- 10+ overnight burn time
- Thermostatically controlled 2-speed fan to aid in heat circulation, strategically set to 40 degrees
- Estimated 18kW max. heat output, Xander has one of the largest heat outputs in its range
- Wide opening, drop-down door for larger logs and ease of use
- Long lasting, high performing, 5mm plate constructed steel fire box, with cast iron/ steel inserts
- Optional Zero Clearance Kit for timber (Built-in) installations
- Heat resistant handles and control knobs, designed to be cool to the touch for your safety and convenience
- 10 year fire box warranty
- Secondary air wash system for cleaner burning
- Super clean air approved double combustion wood burner
- HTP Black (High Temp Paint) finish



Who buys the Xander?

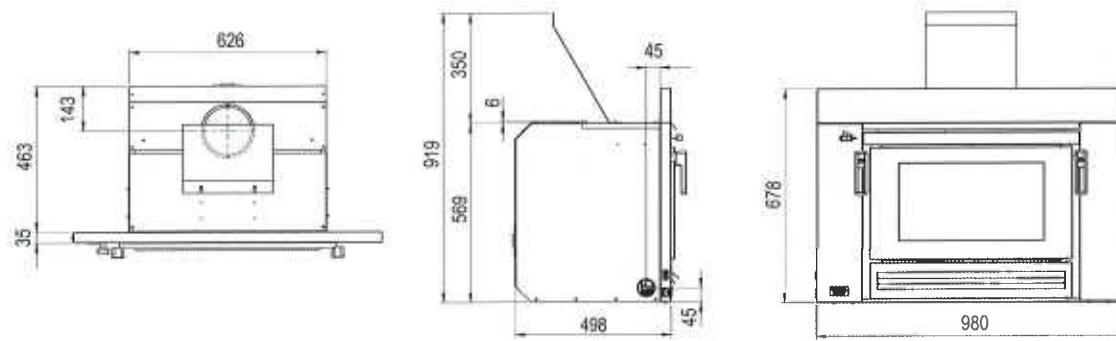
XANDER has one of the largest heat outputs of its class and has an excellent clean air rating. This means both your family's and the environment's needs are met. The large window allows more radiant heat to circulate the room while enhancing the look and ambience of the fire. XANDER with its wider drop-down door fits larger logs with ease. Its stylish aesthetic will suit both new and existing homes.

People wanting a good looking In-Built fire for a new timber wall construction, or those wanting to retrofit into a masonry installation (Insert) will both benefit from the XANDER. It has a thermostatically controlled fan with the option for high speed, low speed or off. This unit provides excellent primary or secondary heating depending on room size, insulation and climate.

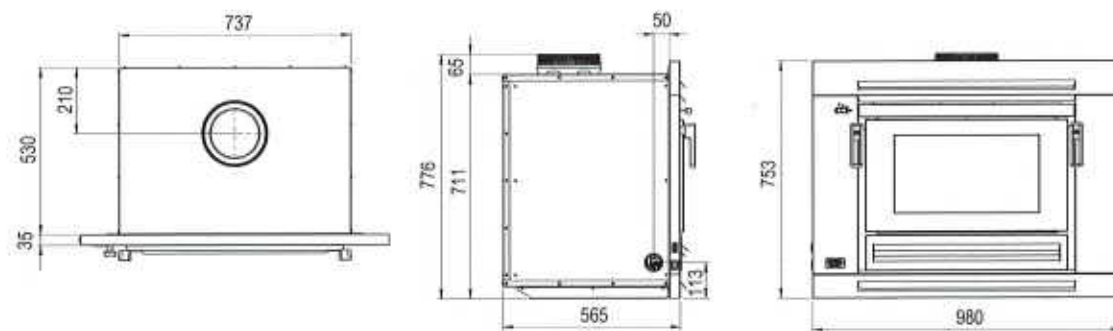
Xander

The Xander is available as both a **Built-in (ZC)** or **Insert Masonry** Wood Burner

Xander Insert (Masonry)



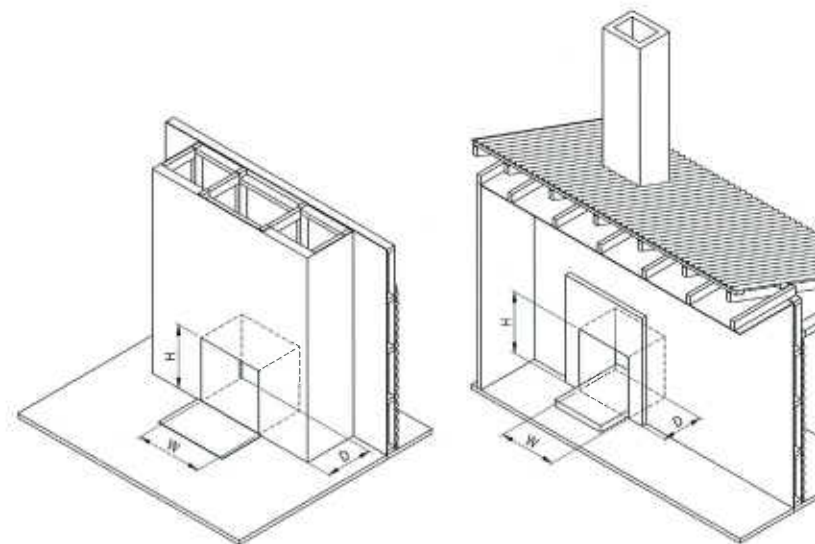
Xander Built-in (ZC, timber structure)



All Yunca solid fuel fireplaces where installed on combustible surfaces, require Ash Floor Protectors as per AS/NZS 2918:2001

Cavity Dimensions

MODEL	Minimum dimensions (mm)		
	Width (W)	Height (H)	Depth (D)
Insert Masonry	680	600	530
Insert Timber	790	731	555





Your local Yunca store