

With supporting or bracing the **Insulated ROOM SEAL FLUE** pipe, there are 3 brace styles available

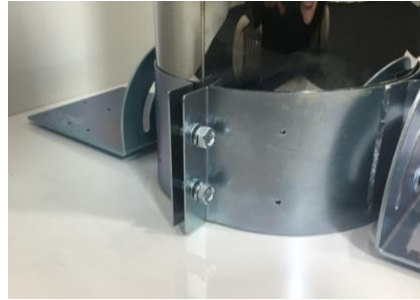
### **Type 1: Roof Support Brace**

#### **RSF-Support**

The RSF-Support bracket is perfect for supporting the RSF flue in a roof cavity



RSF-Support bracket, supplied with wrap around support and 2 x adjustable wings



The wrap around brace ensures a firm and secure fit. Can be fitted after the flue is installed with 2 fixing bolts



Each support wing is pre-drilled with 9 holes  
Each support wing spans 200mm

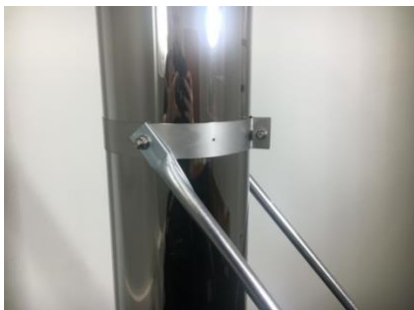


Adjustable support wings allow you to adjust the angle to brace to cross timbers

### **Type 2: Flue Roof Brace**

#### **RSF-Roofbrace**

The RSF-Roofbrace is perfect for supporting additional external flue



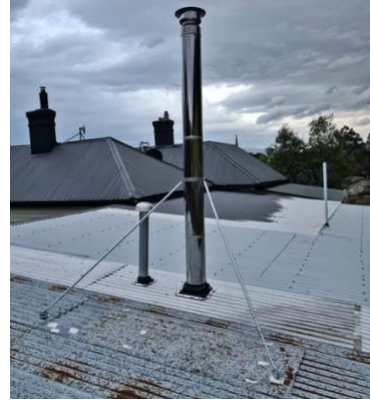
Designed to wrap around the flue for firm and secure bracing



Supplied with 2 x support legs that adjust from 1,800mm up to 2,400mm in length



Each support has adjustable feet, comes predrilled for securing to your roof



The adjustable supports are perfect supporting high external flue installations

### **Type 3: Adjustable Wall Brace RSF-Wallbrace**

The RSF-Wallbrace is perfect for supporting flue to a wall



Heavy duty wall support for supporting RSF flue against a vertical wall



Adjustable arms to suit the stand off at different distances



The brace wrap around the flue for firm and secure bracing



Supplied with 2 x support legs that adjusting the distance from the wall