

# Insulated Room Sealed Flue Kit

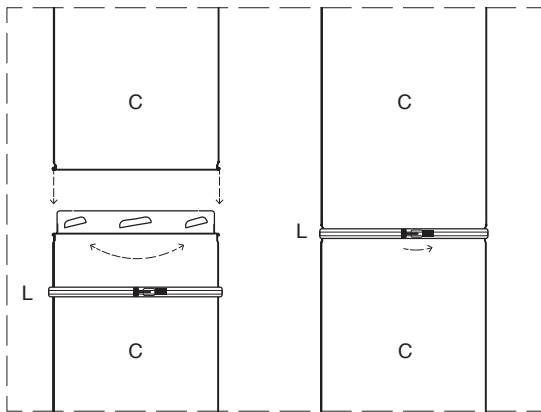
## 8" 5m Flue Kit for Maison Fireplaces

RSF8 FKMAISON

### Standard Flue Kit

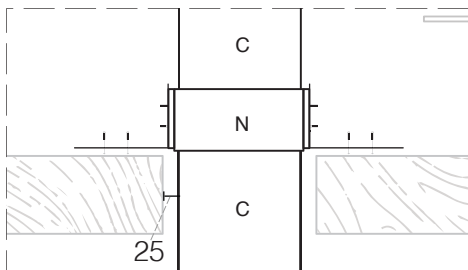
	Item	QTY	Product Code
A	1000mm 8" Single skin flue	1	RSF8-8SS
C	1000mm Room Sealed Flue (with Locking Band)	4	RSF8-1000
F	Wind Cowl Stainless Steel	1	RSF8-COWL
G	Room Sealed Flue Adapter Single to twin 200mm - 250mm	1	RSF8-8STARTER

### Flue Assembly



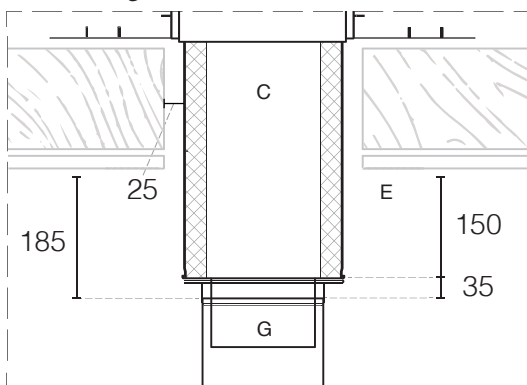
**NOTE:**  
To assemble flue, first lock into place, second secure locking band around joint

### Optional Support Brace



**NOTE:**  
The optional support brace (N) has the ability to adjust to any angle of adjacent roof beams  
\*There is a 25mm clearance between the flue and any timber at all times\*

### Starter Length



**NOTE:**  
150mm single skin flue (A) must terminate 185mm from the ceiling. The 250mm starter length dropping 150mm into the room, with the tail dropping into the A flue  
\*There is a 25mm clearance between the flue and any timber at all times\*

