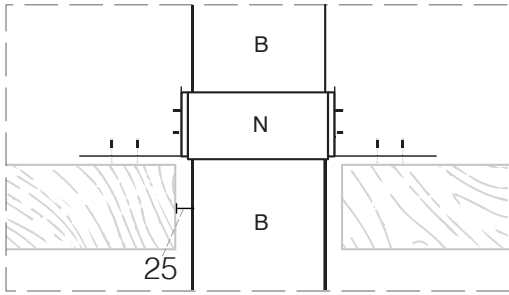


# Insulated Room Sealed Flue Kit

## Fully Sealed 4m Flue Kit

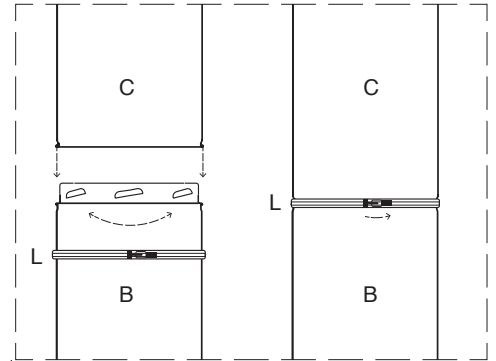
*Painted Insulated RSF from the heater*  
*Stainless Steel RSF outside the home*

### Optional Support Brace

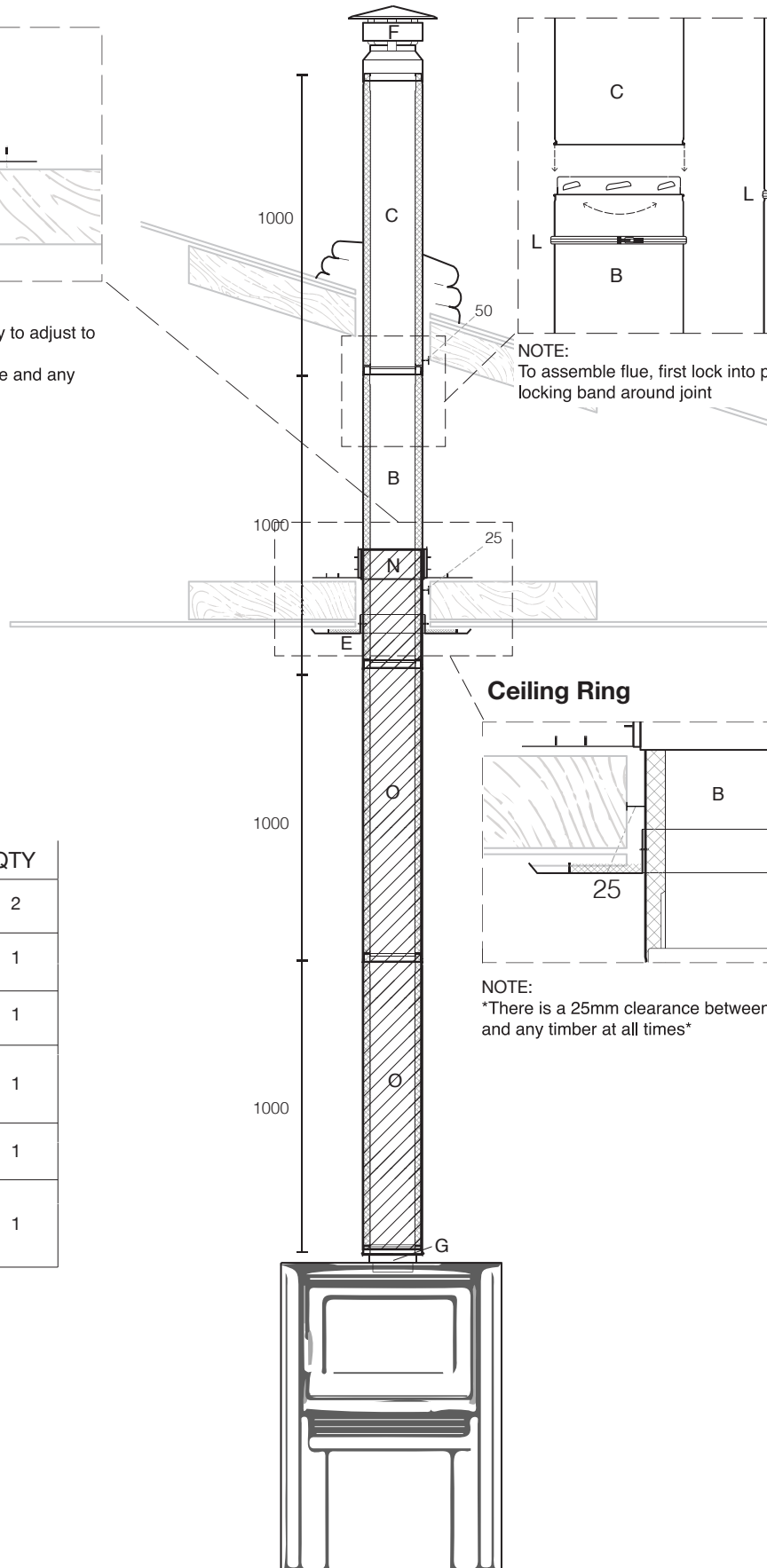


**NOTE:**  
The optional support brace (N) has the ability to adjust to any angle of adjacent roof beams  
\*There is a 25mm clearance between the flue and any timber at all times\*

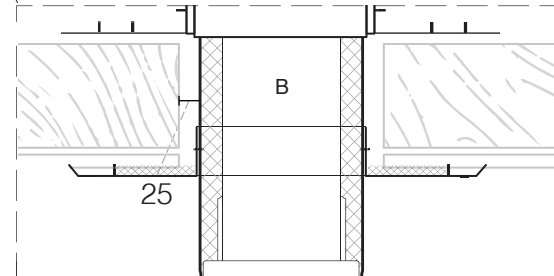
### Flue Assembly



**NOTE:**  
To assemble flue, first lock into place, second secure locking band around joint



### Ceiling Ring



**NOTE:**  
\*There is a 25mm clearance between the flue and any timber at all times\*

### Fully Sealed Flue Kit

Item	QTY	
O	1000mm RSF, painted black (with Locking Band)	2
B	1000mm starter length, end painted for drop box	1
C	1000mm Room Sealed Flue (with Locking Band)	1
E	Ceiling Ring	1
F	Wind Cowl Stainless Steel	1
G	Room Sealed Flue Adapter	1

Paint Finish: Stove Bright Metallic Black