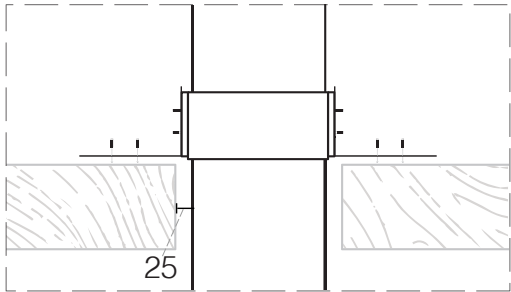


Insulated Room Seal Flue Kit

Pyro Fires 4.5m Flue Kit

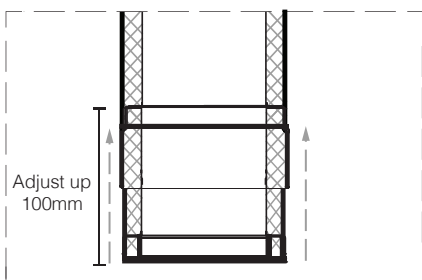
Support Brace



The support brace must be used. It has the ability to adjust to any angle of adjacent roof beams

*There is a 25mm clearance between the flue and any timber at all times

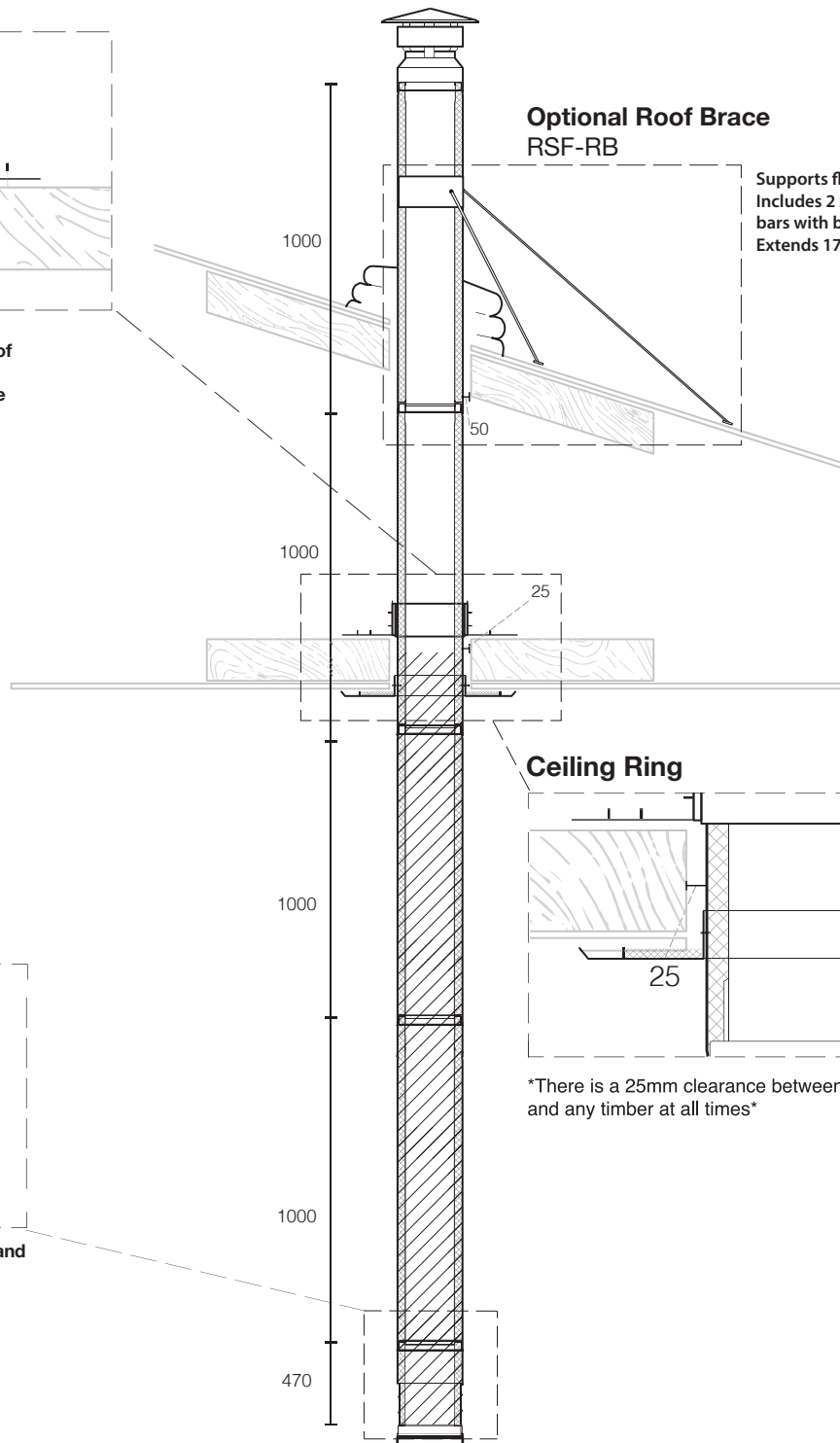
Adjustable length



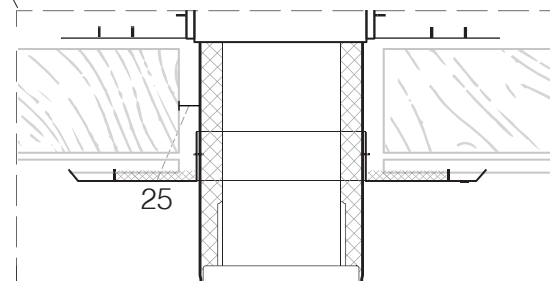
Adjustable piece to be extended up **100mm** and locked in place with a screw at rear. (screw not supplied)

Optional Roof Brace RSF-RB

Supports flue outside the roof. Includes 2 x adjustable support bars with brackets. Extends 1700mm - 3000mm



Ceiling Ring



There is a 25mm clearance between the flue and any timber at all times

